



LX-15

Red Light Therapy Neck Belt

User Manual



1. About American Wellness Authority:

Our journey began long ago, first at a retail store in North Carolina and then online. Over the years, we've sold some of the country's most iconic brands. Ranging in categories like fitness accessories, professional beauty, healthcare, gourmet food, personal care, and many in between. We've sold thousands of SKUs to happy customers all over North America, and we feel truly blessed for the opportunity.

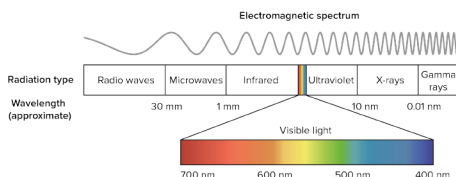
During the Pandemic, we realized how difficult it was to continue delivering our best sellers. We couldn't replenish our stock and there wasn't much we could do. We didn't have control of the production. We couldn't change any designs or product capabilities. With our options limited, we decided to double down on our knowledge and experience, and bring to you American Wellness Authority, or AWA for short.

Since then, our team of 10 spent countless months researching and debating. Searching for ways to deliver practical products, one's we'd be proud of. Our focus was on things that make people feel good and could enhance their lives in one way or another.

So we set out on our journey, and here we are today. We couldn't be more excited to share this with you. And we sincerely appreciate your taking an interest in our product and our company. We're a small, family-run business and there isn't enough we can do to say, thank you.

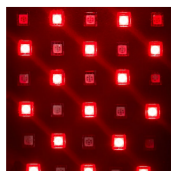
2. About Light Therapy:

Light is a composition of various electromagnetic waves. The white light that we see has a spectrum of 7 different color lights with different wavelengths.



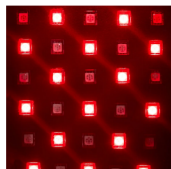
Different wavelengths of visible light penetrate the skin at different depths. Depending on how deeply they penetrate, LED lights to have different biological effects that treat various skin and muscle-related issues.

Red Light Therapy: (660 nm)



- It targets skin cells (fibroblasts), which play a role in collagen production. This protein makes up a large part of connective tissue and helps the skin to recover when it's harmed.
- Reduce skin cell inflammation and redness and improve blood circulation.
- Reduce wrinkles, and dull pigmentation, relieve skin fatigue, restore skin elasticity and luster, and promote skin rejuvenation and deep repair.

Infrared or Near-Infrared Light Therapy: (850 nm)



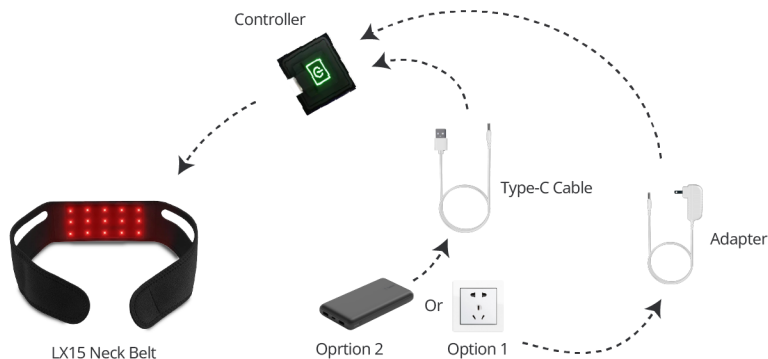
- Penetrate beyond Dermis and reach muscle tissues.
- Get absorbed by the Mitochondria (also called the Powerhouse of the cell) that accelerate the healing process in the tissues and promote blood circulation that reduces pain effectively.
- Allow skin products to absorb better by enhancing skin elasticity and moisture retention. Helps in shrinking pores.

3. Direction of Use:

Option 1: Plug in with an adapter

Option 2: Use a 5V to 12V USB cable to plug in the power bank.

1. Wrap your body, choose a part of the area where you will place it, connect the adapter and the controller into the power connector.
2. Plug into an AC outlet and long press the power button to turn on the device or use a power bank to power the device.
3. According to the sensitivity of the human body to temperature, choose different levels. It is recommended to try from the lowest gear for the first time.
4. Press the appropriate button to set the time and power usage.



4. Function & Modes:

Controller details:

- a. Voltage input DC 5V
- b. Time gear: 3 gears (green, blue, red)
- c. Time setting: green: 15 minutes, blue: 30 minutes, red: 45 minutes

Operating Instructions:

- a. After the power is connected, press and hold the on/off key for 3 seconds to turn on/off
- b. Press the button again to switch to the time setting mode (green, blue, red)
- c. The product has a timing function: 15-45 minutes (green: 15 minutes, blue: 30 minutes, red: 45 minutes)



5. Technical Specifications:

| | | | |
|--------------------|--------------------|----------------|---------------------|
| Material | PU + Fabric | Color | Black |
| LED Power | 3W | Wavelength | 660nm:850nm |
| LED Quantities | 15 pcs | Product Size | 24.4 × 3.5 × 0.0 in |
| Output Current | 2 A | Input Voltage | DC 5V |
| Single pcs Weight | | Temperature | |
| Innerbox Dimension | | G.W. | |
| Carton Dimensions | 7.9 × 5.5 × 1.6 in | Product Weight | 1.1 lbs |

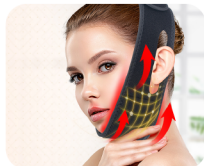
6. Precautions (DOs and DON'Ts):

● Do's

1. Consult a doctor if you feel unwell during or after use.
2. Use this product under the guidance of a doctor if you have sensitive skin or allergic dermatitis.
3. Unplug the product's connecting wire by holding the plug and pulling it out from the socket.
4. Store the product in a ventilated and dry place after use.
5. Clean the product by wiping it gently with a soft cloth on a regular basis.

● Don'ts

1. Do not use the product in places with high humidity and excessively high temperature, such as bathrooms.
2. Do not disassemble, modify, immerse in water or throw the product into fire.
3. Pregnant women, cancer patients, or those who have recently undergone surgery should not use this product.
4. Do not apply heavy pressure to the product.
5. Do not soak or rinse in water, and do not use strong cleaning agents to clean.



7. Cleaning:

- Ensure the device is turned off and disconnected from any power source before cleaning.
- Take a soft, damp (not wet) cloth. You may dampen it with warm water if necessary. Ensure the cloth is not dripping with water to prevent moisture from seeping into the device.
- Carefully wipe the fabric surface of the LX15 Neck Belt with the damp cloth. Gently rub any areas that need cleaning.
- Do not soak the LX15 Neck Belt or use excessive water as it may damage the LEDs and the device's electronic components.
- After cleaning, allow the LX15 Neck Belt to air dry completely before using it again. Ensure it's completely dry to prevent any potential moisture-related issues

8. Storage:

- Store the LX15 Neck Belt in a cool, dry place when not in use.
- Ensure that it is kept away from direct sunlight, extreme temperatures, and moisture.
- Place the LX15 Neck Belt in a protective bag or cover, if available, to prevent dust accumulation.
- Keep the remote control and power cord with the LX15 Neck Belt for convenient access when needed.

9. FAQs:

How does the LX15 Red Light Therapy LX15 Neck Belt work?

The LX15 utilizes red light therapy, which stimulates cellular activity, reduces inflammation, and promotes natural healing, providing targeted relief for neck and related discomfort.

What conditions can the LX15 Neck Belt help with?

The LX15 is designed to address neck pain, stiffness, and related discomfort. Additionally, it's effective for shoulder, arm, and elbow issues, offering versatile relief for various muscle and joint conditions.

How long should I use the LX15 Neck Belt during each session?

It's recommended to use the LX15 for 15-20 minutes per session. However, individual needs may vary, so it's advisable to consult the user manual for personalized usage guidelines.

Can the LX15 Neck Belt be used for other body parts apart from the neck?

While it's primarily designed for neck therapy, the LX15 is effective for the shoulder, arm, and elbow areas. Its versatility makes it suitable for addressing multiple muscle and joint issues.

Is the LX15 Neck Belt portable and travel-friendly?

Yes, the LX15 Belt is designed for portability. It can be powered by a power bank, allowing you to have Red Light Therapy sessions on the go, enhancing its convenience and flexibility.

Is there a warranty for the LX15 Red Light Therapy Neck Belt?

Yes, the LX15 comes with a 1-year warranty. We stand by the quality and durability of our product, ensuring your satisfaction and peace of mind.

Is the LX15 Neck Belt safe for regular use?

Yes, the LX15 is safe for regular use. It employs non-invasive red light therapy, which is gentle on the skin and tissues, providing effective yet safe pain relief and healing.

10. Warranty:

For additional information, feedback, and warranty registration, please don't hesitate to contact us. Our dedicated support team is here to assist you.

Contact Information

Email: Contact@awastore.us

Warranty Details:

Enjoy peace of mind with a 1-year warranty for your LX15 Neck Belt.

Warranty Registration:

To register your product for warranty coverage and access exclusive benefits, simply scan the QR code below or visit our website.



We value your satisfaction and are committed to providing exceptional customer support. Your feedback and warranty registration help us ensure your product's continued performance.

11. Disclaimer:

This device has not been evaluated by the U.S. Food & Drug Administration (FDA). Our products are designed to maintain or encourage a healthy lifestyle and are not intended to diagnose, treat, cure, or prevent any disease. Our products are low-risk, general wellness/fitness products that do not require FDA clearance, in accordance with the "General Wellness: Policy on Low-Risk Devices" draft released on January 20, 2015.

12. Contact Us:

You can contact the AWA team via Email: contact@awastore.us
You can visit www.awastore.us for more information.

