



LX Helmet User Manual



1. About American Wellness Authority:

Our journey began long ago, first at a retail store in North Carolina and then online. Over the years, we've sold some of the country's most iconic brands. Ranging in categories like fitness accessories, professional beauty, healthcare, gourmet food, personal care, and many in between. We've sold thousands of SKUs to happy customers all over North America, and we feel truly blessed for the opportunity.

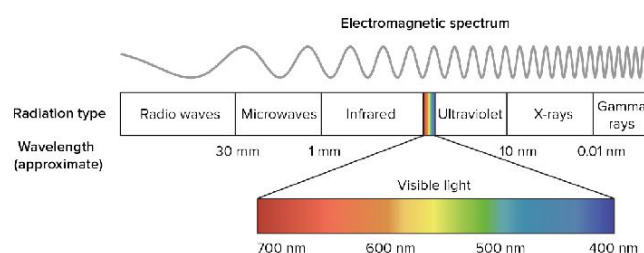
During the Pandemic, we realized how difficult it was to continue delivering our best sellers. We couldn't replenish our stock and there wasn't much we could do. We didn't have control of the production. We couldn't change any designs or product capabilities. With our options limited, we decided to double down on our knowledge and experience, and bring to you American Wellness Authority, or AWA for short.

Since then, our team of 10 spent countless months researching and debating. Searching for ways to deliver practical products, one's we'd be proud of. Our focus was on things that make people feel good and could enhance their lives in one way or another.

So we set out on our journey, and here we are today. We couldn't be more excited to share this with you. And we sincerely appreciate your taking an interest in our product and our company. We're a small, family-run business and there isn't enough we can do to say, thank you.

2. About Light Therapy:

Light is a composition of various electromagnetic waves. The white light that we see has a spectrum of 7 different color lights with different wavelengths.



Different wavelengths of visible light penetrate the skin at different depths. Depending on how deeply they penetrate, LED lights to have different biological effects that treat various skin and muscle-related issues.

Red Light Therapy: (660nm)

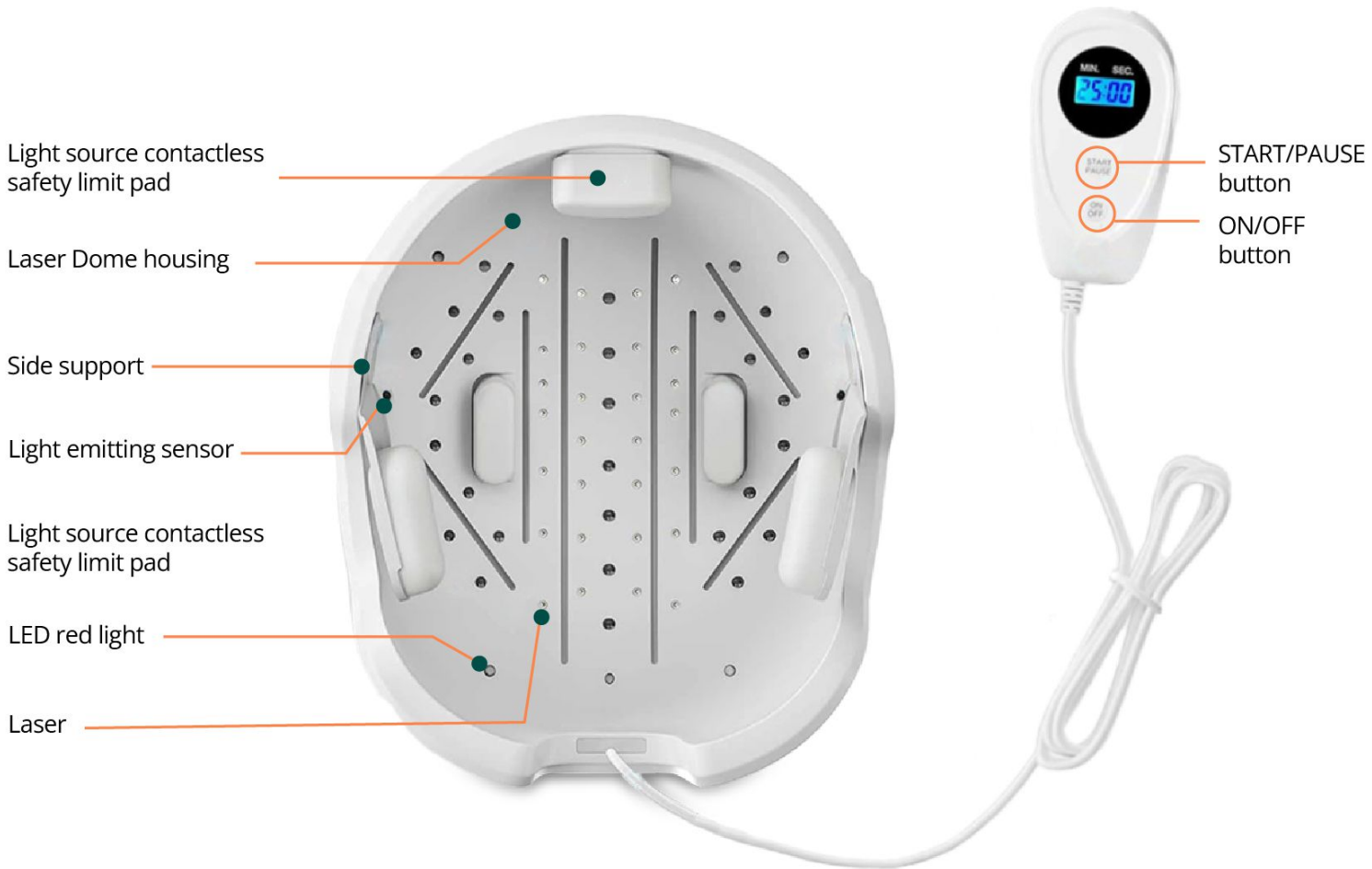
- It targets skin cells (fibroblasts), which play a role in collagen production. This protein makes up a large part of connective tissue and helps the skin to recover when it's harmed.
- Reduce skin cell inflammation and redness and improve blood circulation.
- Reduce wrinkles, and dull pigmentation, relieve skin fatigue, restore skin elasticity and luster, and promote skin rejuvenation and deep repair.

Infrared or Near-Infrared Light Therapy: (850nm)

- Penetrate beyond Dermis and reach muscle tissues.
- Get absorbed by the Mitochondria (also called the Powerhouse of the cell) that accelerate the healing process in the tissues and promote blood circulation that reduces pain effectively.
- Allow skin products to absorb better by enhancing skin elasticity and moisture retention. Helps in shrinking pores.

3. Direction of Use:

- Position the device on your head in a comfortable position.
- Plug the interface end of the power adapter into the interface of the remote controller, then plug the power adapter into the socket.
- Hold the "ON/OFF" button for 3 seconds to start the machine.
- Press the "START/PAUSE" button to begin the 25 minutes countdown.
- If you need to pause the session at any time, press the "START/PAUSE" button and the timer will flash, the device will pause. Press the "START/PAUSE" button to resume the session.
- After using 25 minutes, the device will "beep" and then turn off automatically. To turn off the device, hold the "ON/OFF" button for 3 seconds.



4. Features & Benefits:

Auto / Pause Feature:

- The sensor detects when the helmet is removed from the head.
- In response, it triggers an automatic pause in the therapy session to ensure that no light is emitted when the helmet is not in contact with the scalp.

Hair Growth and Scalp Health:

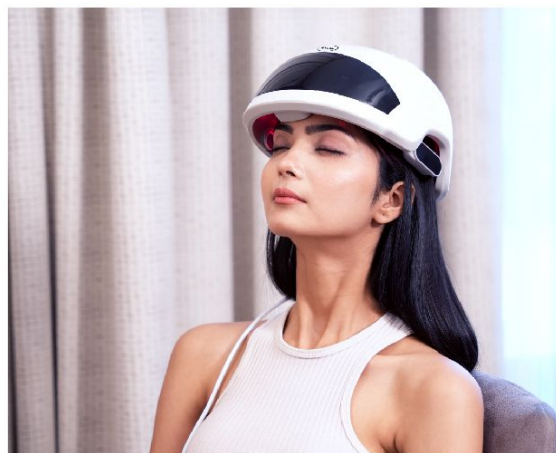
- Red light therapy stimulates hair follicles, promoting hair regrowth and improving the overall health of the scalp.
- It can help with issues like thinning hair, alopecia, and hair loss due to various factors.
- The therapy increases blood circulation in the scalp, which nourishes hair follicles with oxygen and nutrients, further aiding hair growth.

Convenience and At-Home Use:

- Red light therapy may offer relief from muscle tension, reducing discomfort and promoting relaxation.
- The LX Helmet provides a convenient and non-invasive solution for addressing hair loss and scalp concerns in the comfort of your home.

No Chemicals or Medications:

- This therapy is a natural and drug-free approach to hair rejuvenation, eliminating the need for chemical treatments or medications.



5. Technical Specifications:

Material	Fabric	Shell Color	White
Actual Power	7.5W	Wavelength	650-660nm
LED Quantities	30pcs	Product Size	5.9*5.6*0.0in
Output Current	5.0V--1.5A	Input Voltage	100-240V-50/60Hz
Carton Dimensions	12.2*10.6*7.1in	Light Mode	Continuous
Product Weight	4.4lbs	G.W.	6.6lbs

6. Precautions (DOs and DON'Ts):

- Do not look directly at, or use optical instruments like magnifiers or microscopes to look at, the laser light or its reflection off a mirror-like surface.
- Discontinue use of the device if scalp itching or tingling occurs.
- Do not get the device or adapter wet.
- Do not place the device or adapter where it can fall or be pulled into a sink or a tub.
- If the unit is dropped into water or other liquids, unplug the device from the power outlet immediately.

7. Cleaning:

- The device should be unplugged prior to any cleaning.
- First wipe the helmet surfaces with a clean cloth dampened with clean water.
- Inspect the surfaces thoroughly for any remaining visible contaminants, and repeat wiping if necessary.
- Allow to air dry.
- Do not use the device unless it is completely dry.

8. Storage:

- When not in use, store the LX Helmet in a cool, dry place away from direct sunlight, extreme temperatures, and moisture.
- Use the provided storage bag or case, if available, to protect the device from dust and potential damage.

9. FAQs:

What is the sensor function in the LX Helmet?

The helmet is equipped with a sensor that automatically pauses the session and turns off the lights when it detects that the helmet is not in contact with the scalp. This enhances safety and conserves energy.

Can multiple family members use the same helmet?

While the helmet is designed for individual use, it can be sanitized between uses for hygiene purposes. However, it's recommended to have a separate helmet for each user for a more personalized experience.

How do I clean and maintain the LX Helmet?

Use a soft, damp cloth to gently clean the helmet's surface. Avoid using chemicals or excessive moisture. Store it in a cool, dry place when not in use.

Can the LX Helmet be used with other hair treatments or medications?

Consult with a healthcare professional before combining the use of the helmet with other treatments to ensure safety and effectiveness.

Is the LX Helmet safe for children and pets?

Keep the helmet out of reach of children and pets to prevent accidental use.

Can I use the LX Helmet on wet hair?

It is recommended not to use the helmet on wet hair immediately after showering, swimming, or bathing. Ensure your hair is dry for optimal results and safety.

How does the LX Helmet work, and what is its primary function?

The LX Helmet employs red light therapy to stimulate hair follicles and promote hair growth. Its primary function is to address hair loss, thinning hair, and scalp health.

Is red light therapy safe, and are there any side effects?

Red light therapy is generally considered safe. However, if you experience any discomfort, itching, or tingling during use, discontinue the session and consult a healthcare professional.

Is the LX Helmet compatible with various head sizes and shapes?

Yes, the helmet is designed with adjustability in mind, and it can accommodate various head sizes and shapes for a comfortable fit during therapy sessions.

Can I use the LX Helmet in conjunction with other hair care products or serums?

While red light therapy can complement your hair care routine, consult with a healthcare professional or your distributor to ensure compatibility with specific products.

10. Warranty:

For additional information, feedback, and warranty registration, please don't hesitate to contact us. Our dedicated support team is here to assist you.

Contact Information

Email: Contact@awastore.us

Warranty Details:

Enjoy peace of mind with a 1-year warranty for your LX Helmet.

Warranty Registration:

To register your product for warranty coverage and access exclusive benefits, simply scan the QR code below or visit our website.



We value your satisfaction and are committed to providing exceptional customer support. Your feedback and warranty registration help us ensure your product's continued performance.

11. Disclaimer:

This device has not been evaluated by the U.S. Food & Drug Administration (FDA). Our products are designed to maintain or encourage a healthy lifestyle and are not intended to diagnose, treat, cure, or prevent any disease. Our products are low-risk, general wellness/fitness products that do not require FDA clearance, in accordance with the "General Wellness: Policy on Low-Risk Devices" draft released on January 20, 2015.

12. Contact Us:

You can contact the AWA team via Email: contact@awastore.us
You can visit www.awastore.us for more information.



American Wellness Authority



American Wellness Authority



[awa_products](#)



[awastore.us](#)



[awastore_us](#)



[awastore_us](#)